

KNOCKBEG

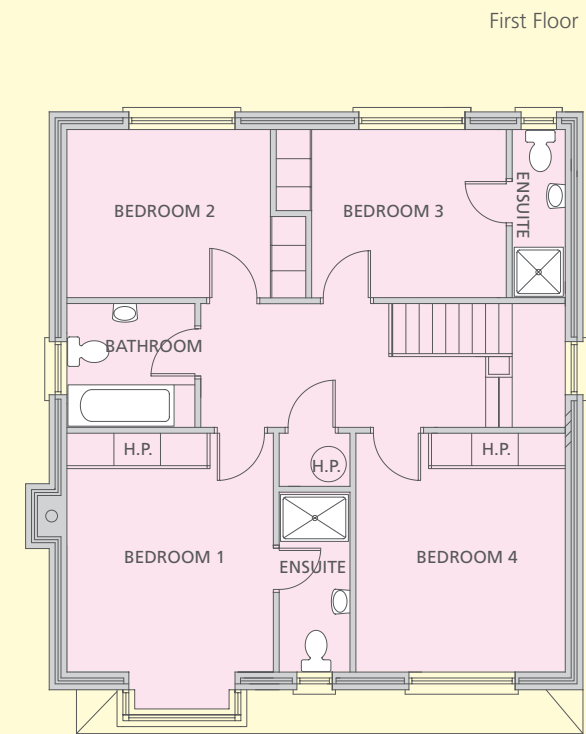
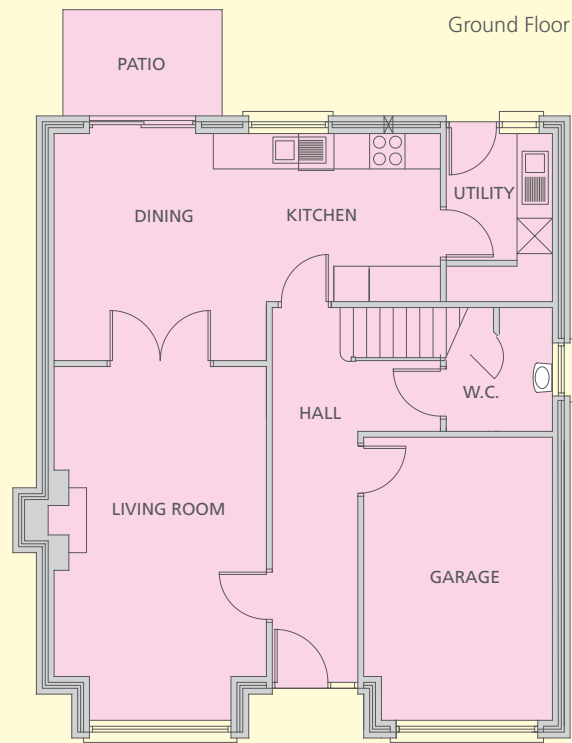
FLOORPLANS

TYPE A FLOOR AREAS

TOTAL FLOOR AREA: 160 m² / 1722 ²ft

	LENGTH	WIDTH	LENGTH	WIDTH
GROUND FLOOR				
Family Room	4800 mm	3190mm	15.75 ft	10.4 ft
Living Room	6000 mm	3590mm	19.7 ft	11.7 ft
Dining Room	3850 mm	3600 mm	12.6 ft	11.8 ft
Kitchen	2850mm	2950mm	9.3 ft	9.6 ft
Utility	1250mm	1800 mm	4.1 ft	5.9 ft
W/C	2100 mm	1800 mm	6.9 ft	5.9 ft
FIRST FLOOR				
Bedroom 1	4050 mm	3490 mm	13.3 ft	11.4 ft
Ensuite	3050 mm	1200 mm	10 ft	3.9 ft
Bedroom 2	1400 mm	3450 mm	4.6 ft	11.3 ft
Bedroom 3	2850 mm	3750mm	9.3 ft	12.3 ft
Ensuite	2850mm	1050mm	9.3 ft	3.4 ft
Bedroom 4	4050mm	3540mm	13.3 ft	11.6 ft
Bathroom	2100 mm	2170 mm	6.9 ft	7.1 ft

N.B. Dimensions are indicative only.



TYPE A

KNOCKBEG

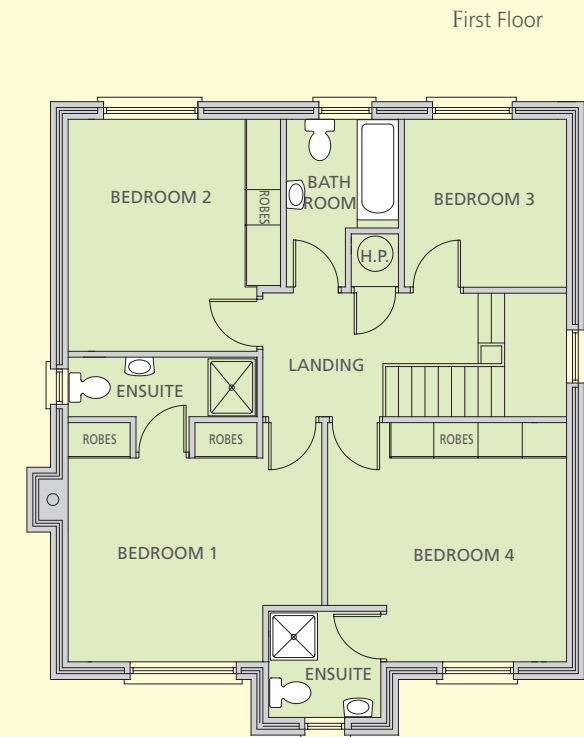
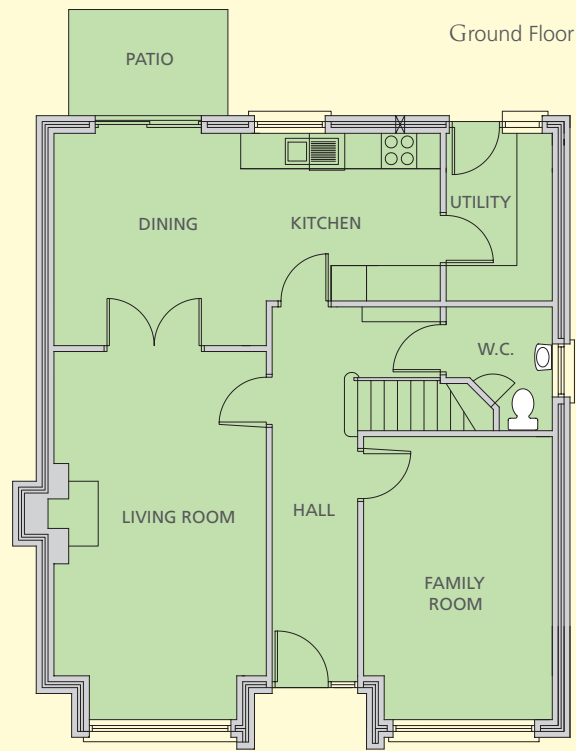
FLOORPLANS

TYPE B FLOORAREAS

TOTAL FLOOR AREA: 160 m² / 1722 ʒ

	LENGTH	WIDTH	LENGTH	WIDTH
GROUND FLOOR				
Family Room	4800mm	3200 mm	15.7 ft	10.4ft
Living Room	3600mm	5500mm	11.8ft	18ft
Dining Room	3700mm	3600mm	12.1ft	11.8ft
Kitchen	2850mm	2850mm	9.3ft	9.3ft
Utility	1800mm	2850mm	5.9ft	9.3ft
W/C	2100mm	1800mm	6.8ft	5.9ft
FIRST FLOOR				
Bedroom 1	4050mm	4055mm	13.2ft	13.3ft
Bedroom 2	4300mm	5165mm	14.1ft	16.9ft
Bedroom 3	3935mm	3600mm	12.9ft	11.8ft
Bedroom 4	2750mm	2850mm	9ft	9.3ft
Bathroom	1900mm	2850mm	6.2ft	9.3ft

N.B. Dimensions are indicative only.



TYPE B

KNOCKBEG

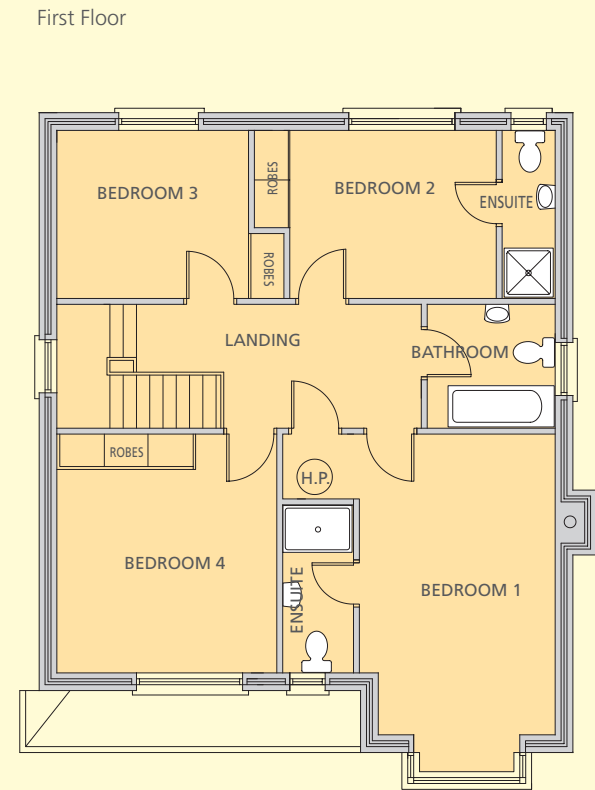
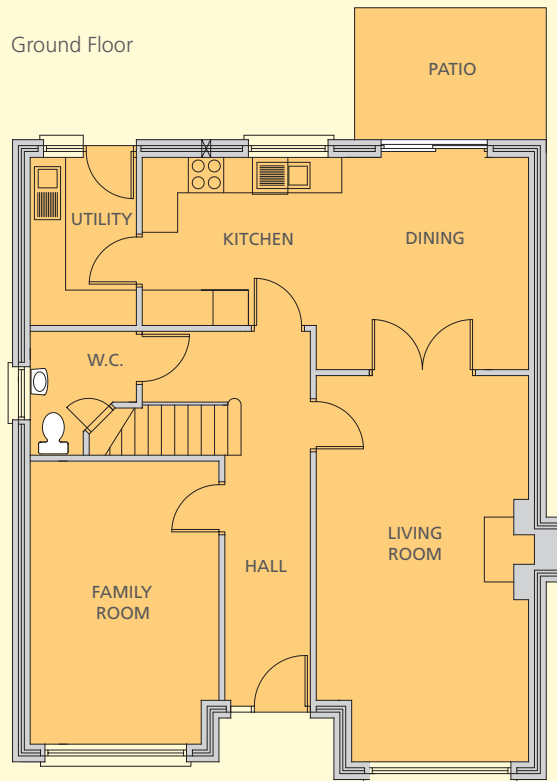
FLOORPLANS

TYPE D FLOOR AREAS

TOTAL FLOOR AREA: 165 m² / 1775 ʒf

	LENGTH	WIDTH	LENGTH	WIDTH
GROUND FLOOR				
Family Room	4800mm	3200mm	15.75 ft	10.5 ft
Living Room	5500mm	3600mm	18 ft	11.8 ft
Dining Room	3600mm	3600mm	11.8 ft	11.8 ft
Kitchen	2850mm	2950mm	9.3 ft	9.6 ft
Utility	2850mm	1800mm	9.3 ft	5.9 ft
W/C	2100mm	1800mm	6.9 ft	5.9 ft
FIRST FLOOR				
Bedroom1	5100mm	3250mm	16.7ft	11.5 ft
Ensuite	2850mm	1000mm	9.3 ft	3.3 ft
Bedroom 2	2850mm	3950mm	9.3 ft	12.9 ft
Ensuite	2850mm	1050mm	9.3 ft	3.4 ft
Bedroom 3	2850mm	3250mm	9.3 ft	10.6 ft
Bedroom 4	4050 mm	4000 mm	13.3 ft	13.1 ft
Bathroom	2100mm	2170mm	6.9 ft	7.1 ft

N.B. Dimensions are indicative only.



TYPE D

KNOCKBEG

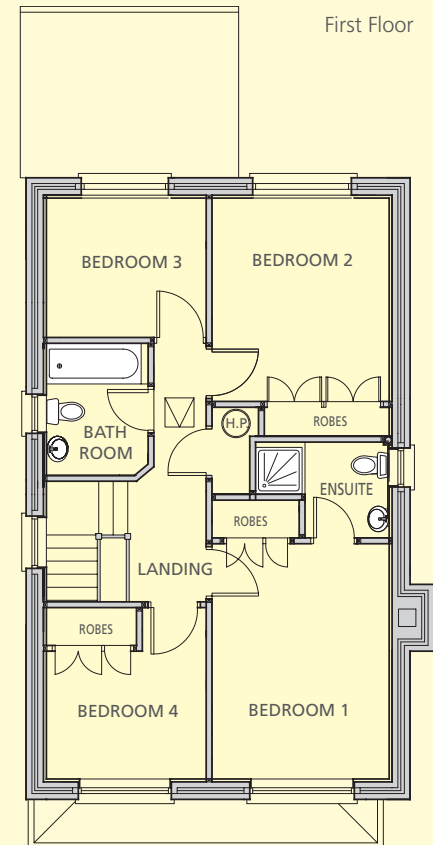
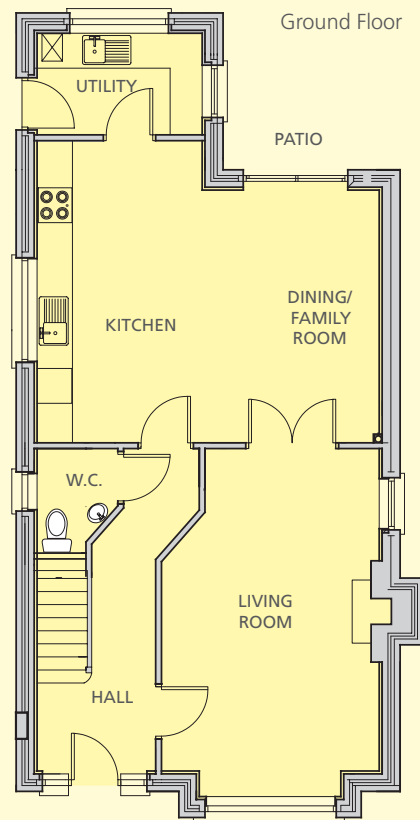
FLOORPLANS

TYPE E1 FLOOR AREAS

TOTAL FLOOR AREA: 125 m² / 1345 sq ft

	LENGTH	WIDTH	LENGTH	WIDTH
GROUND FLOOR				
Living Room	5600mm	3800mm	18.3 ft	12.5 ft
Dining Room/Family Room	4400mm	3800mm	14.4 ft	12.5 ft
Kitchen	5885mm	2190mm	19.3 ft	7.2 ft
Utility	1800mm	2940mm	5.9 ft	9.65 ft
FIRST FLOOR				
Bedroom 1	4000mm	3100mm	13.1 ft	10.1 ft
Bedroom 2	3500mm	3100mm	11.5 ft	10.1 ft
Bedroom 3	2450mm	2800mm	8 ft	9 ft
Bedroom 4	3000mm	2800mm	9.8 ft	9 ft
Bathroom	2275mm	1800mm	7.5 ft	5.9 ft

N.B. Dimensions are indicative only.



TYPE E 1

KNOCKBEG

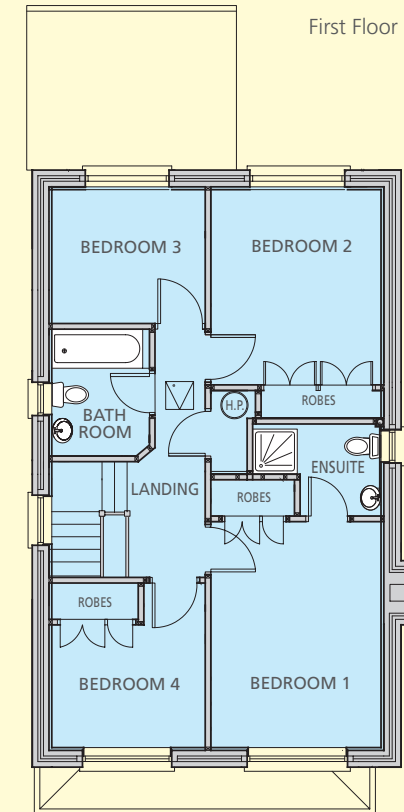
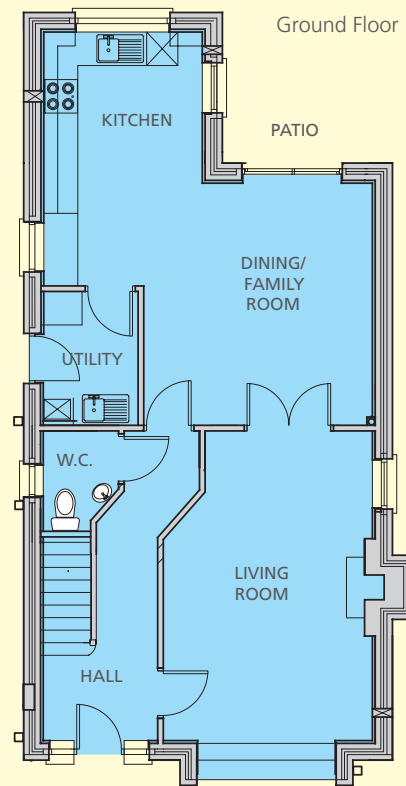
FLOORPLANS

TYPE E 2 FLOOR AREAS

TOTAL FLOOR AREA: 125 m² / 1345 sq ft

	LENGTH	WIDTH	LENGTH	WIDTH
GROUND FLOOR				
Living Room	5600mm	3800mm	18.3 ft	12.5 ft
Dining Room/Family Room	4400mm	2415mm	14.4 ft	7.9 ft
Kitchen	4650mm	3575mm	15.2 ft	11.7 ft
Utility	2400mm	1750mm	7.8 ft	5.7 ft
FIRST FLOOR				
Bedroom 1	4000mm	3100mm	13.1 ft	10.1 ft
Bedroom 2	3500mm	3100mm	11.5 ft	10.01 ft
Bedroom 3	2450mm	2800mm	8 ft	9 ft
Bedroom 4	3000mm	2800mm	9.8 ft	9 ft
Bathroom	2275mm	1800mm	7.4 ft	5.9 ft

N.B. Dimensions are indicative only.



TYPE E 2